

Item 7

Community Safety in Surrey Heath

**Surrey County Council's
Local Committee in Surrey Heath**

22nd September 2005

KEY ISSUE:

This report outlines the Community Safety issues in Surrey Heath and the 2005/08 Strategy. It also reports on the crime data trends for the last strategy (2002/05) period and for 2004/05.

SUMMARY:

Surrey is a relatively safe place to live, and the Borough is one of the safest. For the year 2004/05, the Crime rate fell by 8.4%. 2004/05 was the final year of the 3 year community safety strategy. Over the period 2002/05 the crime figure is down by 4.8%. However, there remains a gap between the perception of crime and actual crime, in part caused by the impact of anti social behaviour. Reassurance therefore remains important.

As required by the 1998 Crime and Disorder Act, the Crime and Disorder Reduction Partners (Safer Surrey Heath Partnership) work together, and with other agencies, to reduce both the levels of crime and fear of crime in Surrey Heath. The Partnership comprises of six statutory partners: the Police, Borough Council, Surrey County Council, Fire and Rescue Service, the Health Authority, and the Police Authority.

During the last year, the Safer Surrey Heath Partnership (SSHP) has completed a survey and audit from which the new 3 year (2005/08) strategy has been developed.

The partnership funded £196,751 towards community safety projects in Surrey Heath in 2004 / 05. The County Council contributed £24,000 funding towards the partnership priorities, and has allocated a further £24,000 for the year 2005/06.

OFFICER RECOMMENDATIONS:

That the Local Committee:

1. Notes the update of Community Safety issues.
2. Comments on any particular issues of concern arising from the report or the presentation.
3. Authorises the Area Director to contribute funding to the Safer Surrey Heath partnership (SSHP) shared fund.
4. Endorses the importance of the contribution made by services to Community safety.

INTRODUCTION

1. Surrey is one of the safest Counties in England (based on recorded crime figures) and Surrey Heath is now the second safest borough in Surrey. Changes in the way crime is defined and reported mean that trends are difficult to plot, however, the comparative trend is a positive one.

ANALYSIS

2. Crime in Surrey Heath fell in 2004/05 by 8.4%, with recorded crimes at their lowest level in the last five years.
3. Based on reported crimes per 1,000 population, Surrey Heath is ranked second (third last year) out of the eleven Boroughs/Districts, and has recorded the second highest drop in recorded crime figures in the 04/05 figures.

Area	<u>Crimes per 1,000 population by Borough / District</u>		
	Reported crimes 04/05	Crimes per 1,000 pop	% change on 03 / 04
Waverley	5972	51.6	-11.0%
Surrey Heath	4266	53.1	-8.5%
Mole Valley	4344	54.1	-0.1%
Tandridge	4660	58.8	+3.6%
Reigate and Bansted	8335	65.8	-2.3%
Epsom and Ewell	4514	67.3	+0.6%
Elmbridge	8317	68.2	-6.0%
Runnymede	5778	74.0	-3.9%
Woking	7166	79.8	-5.2%
Guildford	10881	83.9	-3.9%
Spelthorne	8621	95.4	+2.0%

4. There were 4266 recorded crimes in Surrey Heath in 2004/05. The most frequent crimes were Theft and Handling, Criminal Damage and Violence Against the Person (17% of which were Domestic Abuse), this followed the trend of the last four years.
5. Additional Borough Crime rate information is detailed in Annex 1.

Table of numbers of recorded crimes in Surrey Heath

Offence	00/01	01/02	02/03	03/04	04/05
Total Violence Against the Person	489	500	596	663	579
Total Sexual Offences	33	38	43	43	45
Total Burglary Dwelling	305	240	255	255	240
Total Burglary Non-Dwelling	409	322	371	374	349
Total Robbery	18	29	24	30	22
Total Theft and Handling	1833	1798	1690	1664	1524
Fraud and Forgery	828	740	401	282	286
Criminal Damage	842	811	883	1147	1055
Drug Offences	196	142	153	129	88
Other Notifiable Offences	47	48	65	77	78
Total Notifiable Offences	5000	4668	4481	4664	4266

Domestic Abuse (DA)

6. The partnership funds an outreach worker provided by Surrey Women’s Aid (SWA). Support for male victims is provided by Victim Support.

7. Domestic Abuse Crimes And Incidents, 2004/05:

	Crimes/Incidents	Repeats	% Repeats in last 12 months
Surrey:	11563	3210	27.8%
Surrey Heath	789	213	27.0%

8. When recording crimes, the Police can add a “Flag” to indicate if domestic abuse is an aspect (mostly this relates to violent crime). The percentage flagged is as follows:

	All crimes	Violent crime
Surrey:	4.2%	19%
Surrey Heath	3.7%	17%

Review of the 2002-2005 Strategy

9. The 2002-2005 strategy had the following priority areas:

- Violent Crime
- Residential Burglary
- Substance Misuse

- Antisocial Behaviour
- Vehicle Crime

10. The key achievements of this strategy are listed in Annex 2.

11. The SSHP funding for 2004/05 has supported projects under the Community Safety Strategy totalling £196,751. A detailed list of projects is included under Annex 3 and includes activities to tackle antisocial behaviour and reassurance, as well as crime.

The 2005/08 Safer Surrey Heath Strategy

12. In response to the audit of crime statistics and the fear of crime survey, and incorporating the wider priorities set as part of the strategy and funding criteria by the Government of the South East (GOSE), the 2005/08 Safer Surrey Heath Strategy priorities and targets are as follows:

- **Reassurance**
To reduce the fear of becoming a victim of crime.
To increase the awareness of success in reducing crime and disorder.
- **Anti-Social Behaviour**
To reduce the number of complaints of anti-social behaviour and therefore local residents fear of crime.
- **Violent Crime**
To reduce the level of violent crime.
- **Domestic Abuse**
To increase the awareness of domestic violence and encourage victims to seek help and support.
To reduce the number of repeat victims of domestic violence.
- **Casualty Reduction**
To increase the awareness of road safety issues and reduce the level of people killed or seriously injured.
- **Alcohol and Substance Misuse**
To increase the awareness about substance misuse.
To increase access to treatment for users of drugs.
Reduce the level of alcohol related crime.
- **Other Crime** (including vehicle crime, domestic burglary and criminal damage)
To reduce overall levels of crime.

In addition processes to support these targets include:

- **Participation**
To increase local communities' participation in local decision-making.
- **Tackling Prolific Offenders**
To develop the role of the Community Incident Action Group in relation to prolific and persistent offenders, as well as other persons having a disproportionate community impact.

Community Safety Partnership Working in Surrey Heath

13. Under the Crime and Disorder Reduction Act 1998, all local authorities are required to contribute to Community Safety. The six statutory partners are

the County Council, Borough Council, Police, Health Authority, Fire and Rescue Service and the Police Authority.

14. In addition to setting and monitoring a 3 year strategy, each partner has a responsibility under section 17 to include community safety in planning their core service delivery. In the case of the County council services, much of the section 17 contribution is in preventative work – e.g. road safety, improving trading standards, and in work with children and young people.
15. In addition partners contribute to the CIAG (Community Incident Action Group: relating to people), and JAG (Joint Action Group: relating to place). These groups meet to problem solve issues related to individuals and locations respectively.

Tackling Crime And Disorder In Surrey Heath

16. There are seven Neighbourhood Specialist Officers (NSOs) in Surrey Heath. These Officers give extra support to communities. The areas covered in Surrey Heath are:
 - Frimley and Frimley Green
 - St. Michaels
 - Old Dean
 - Bagshot
 - Villages (Chobham, Windlesham, Lightwater, West End and Bisley)
 - Town
 - Heatherside / Parkside / St Pauls / Mytchett & Deepcut
17. The Community Support Officers work alongside the NSOs, and are managed and directed by Surrey Police. They hold regular surgeries and are a valuable link between the community and the police, with individual PCSOs closely with their communities.
18. Police Community Safety Officers (PCSOs) are a further partnership arrangement, with 3 of the 7 being funded as follows: The Police Authority is funding 51%. Surrey County Council provides £15,000 per year from members' Allocations, Surrey Heath Borough Council provides £20,000, with the Parish Councils providing between £2,000 and £5,000 per year. The joint funded Police Community Support Officers are:
 - PCSO Lizzie Horwell – Chobham, West End and Bisley
 - PCSO Anthony Walker – Lightwater, Bagshot and Windlesham
 - PCSO Mohamed Jamil – St Michael's
19. Within Surrey Heath the Police have put in place a system of Neighbourhood Panel Meetings. At these regular meeting local people are invited to come along and talk to their NSO and PCSO about local issues. At each meeting the key local issue is identified and the Police Officers commit to looking into this issue and reporting back at the next meeting. The key issues identified at meeting already held are detailed in Annex 4. This list also contains dates of future meetings.

CONSULTATION

20. To inform the new Community Safety Strategy, a fear of crime survey and an audit was undertaken by the SSHP. This shows reassurance remains a key priority. In addition, the recent Standing Citizens Panel highlighted concerns regarding alcohol and licensing, and also the perceptions of speeding traffic.

21. Details of these consultations are listed in Annex 5.

FINANCIAL IMPLICATIONS

22. The Area Director has been allocated £24,000 subject to Local Committee approval for Crime and Disorder as a contribution towards the pooled funding of the SSHP.

SUSTAINABLE DEVELOPMENT IMPLICATIONS

23. None.

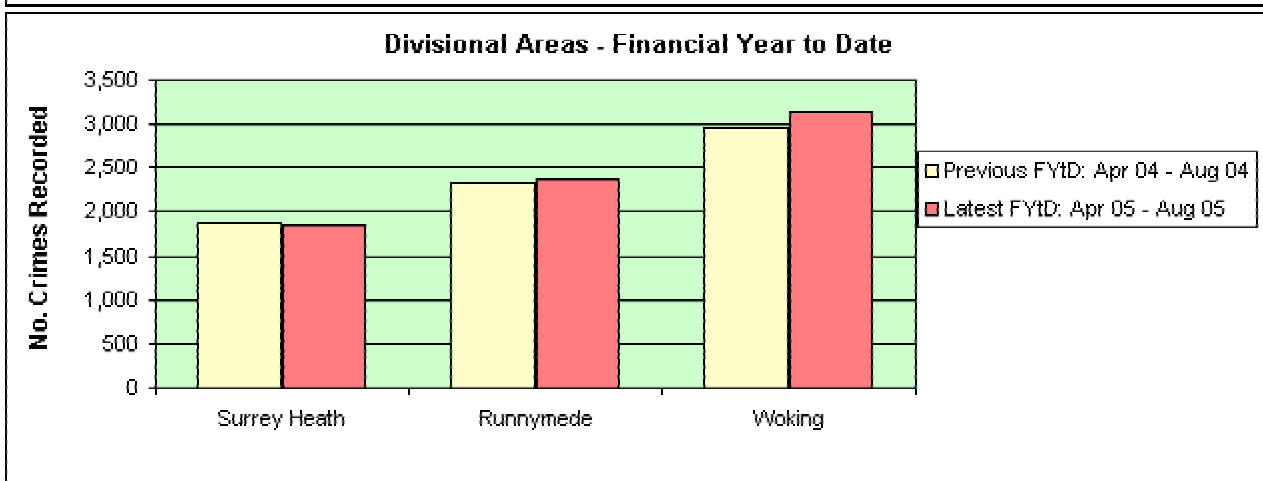
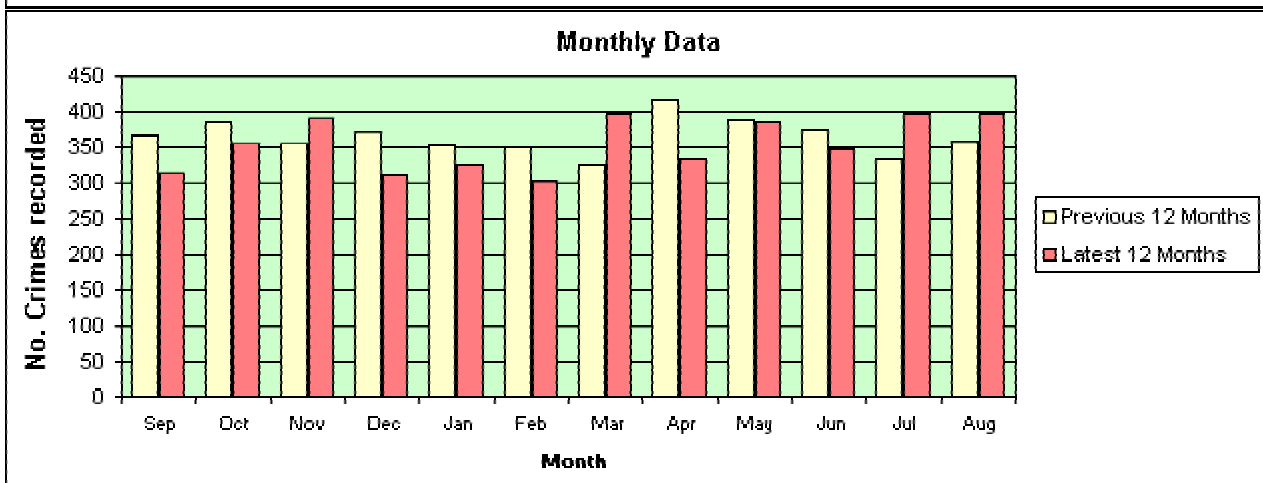
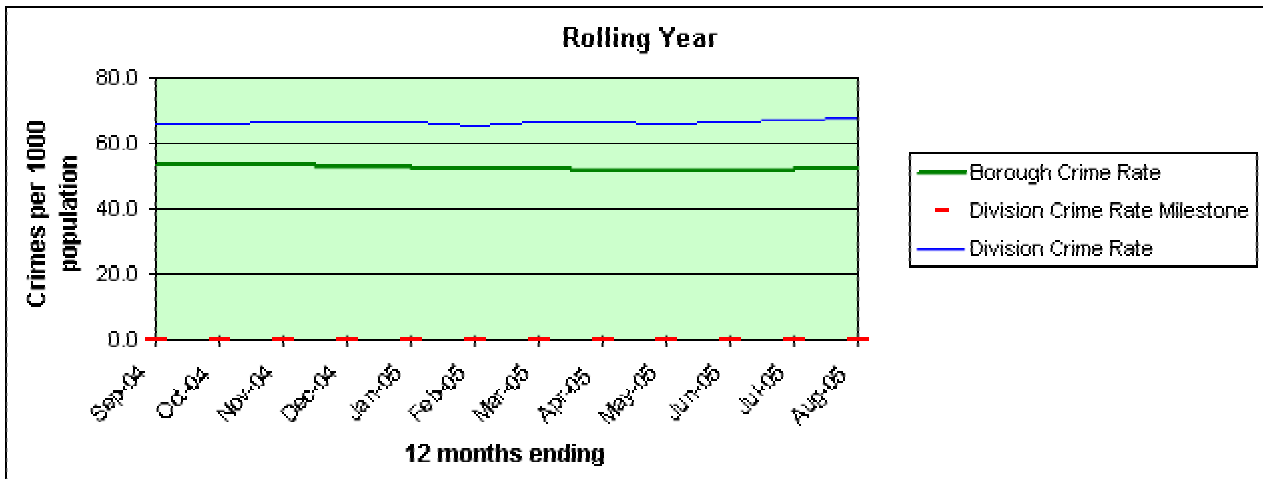
CRIME & DISORDER IMPLICATIONS

24. This report has wide ranging crime and disorder implications.

EQUALITIES IMPLICATIONS

25. None.

LEAD OFFICER:	Carolyn Rowe, Surrey County Council Area Director
CONTACT OFFICERS:	Jane Biscombe, Local Committee and Partnership Officer, Surrey Heath Mark Adams, Borough Inspector, – Surrey Police.
TELEPHONE NUMBER:	01276- 702504
BACKGROUND PAPERS:	Surrey Heath Community Safety Strategy 2005-08. Surrey County Council Crime and Disorder Reduction Strategy 2005/08.



Data to August 2005	Surrey Heath	Runnymede	Woking	D - NW
Rolling Year	4,258	5,603	6,965	16,826
Latest FYtD: Apr 05 - Aug 05	1,862	2,363	3,130	7,355
Previous FYtD: Apr 04 - Aug 04	1,870	2,315	2,959	7,144
% Change	- 0.4%	+ 2.1%	+ 5.8%	+ 3.0%

Key achievements from the 2002-2005 strategy were:

- A reduction in the number of public disorder offences across the Borough to 4.9 per 1,000 population from 21 per 1,000 population (the largest reduction in public disorder offences per 1,000 population in Surrey in 03/04). This was achieved through a number of initiatives including proactive policing of late night town centre drinking and the provision of a new evening taxi rank and night bus service to help the dispersal of pub/club goers out of Camberley town centre.
- A reduction in the number of repeat victims of domestic violence by the better sharing of information between agencies and Partnership funding for the employment as from September 2003 of a domestic violence outreach worker in Surrey Heath.
- A reduction in the number of domestic burglaries by an average of 18% per year from the 2000/2001 figures. Measures taken by the Partnership included assistance to the elderly and vulnerable in improving home security as well as home safety advice/campaigns and support for Neighbourhood Watch.
- A reduction in drug offences to less than 150 a year. Partnership activity included a Borough wide awareness campaign aimed at schools and parents on substance misuse, offering Life Education Centre support to all primary schools, RIDE education support to teachers in Surrey Heath and regular SNAP dance evenings, with an average attendance at "Say No and Phone" events of 500 young people aged 11-16 years.
- A reduction in the number of abandoned vehicles and complaints about fly tipping, graffiti and illegal camping in the Borough by prompt actioned improved joint working.
- A reduction in the number of vehicle crimes by hot spot targeting (eg at Watchmoor Park this led to a 48% decrease in recorded car crime in that area).

Annex 3

Project	Amount
Drug Intelligence Team (Police)	35,000
Communication Strategy/Campaign to ensure the Safer Surrey Heath message reaches local people.	10,000
Surrey Young People Service - Outreach programme to support drug users.	6,860
Gating to alleyways High Street, Camberley to avoid anti-social behaviour.	5,000
Domestic Violence contribution (Police/SCC)	25,000
Old Dean Young Parents Group.	3,000
Contribution to Audit 2004 costs.	4991
Vehicle Crime Prevention Signs (part spend)	325
Contribution to Audit 2004 (part payment)	467
RIDE (part of project) – teacher training to support teachers in providing life education	2,000
CIAG Administrative Assistant	10,000
CIAG Intervention Fund	5,368
Late Night Bus Scheme for Camberley Town Centre.	10,000
Life Education Centres - educates young people in schools about drug awareness.	3,840
Mobile CCTV unit	20,000
Drug Intervention Programme Supporting Youth	6,000
Audit/Strategy contribution	5,000
Anti Social Behaviour Case Manager	10,000
Caseworks software to allow partners to manage and share information effectively	10,600
Youth Café in Camberley Town Centre on a Friday night	7,500
Voices – youth photography and drama project	10,000
Frimley Park Hospital study into alcohol related cases in A & E.	4,000
Nightsafe Card to help people keep themselves safe at night in the Town Centre. Sent out with Council Tax letters	1,800
Total	196,751

SURREY HEATH NEIGHBOURHOOD PANELS

WARD	ISSUE	NEXT MEETING
BAGSHOT	Mini motorcycles – College ride	21 Sept '05 Connaught School, Manor Way
BISLEY	Recreation ground	19 Sept. '05 Jubilee Hall, Guildford Rd.
CHOBHAM	Pennypot lane Travellers site	31 August '05 Chobham pavilion, Station Rd.
FRIMLEY & PARKSIDE	Anti Social Behaviour – Balmoral Drive	14 Sept. '05 St. Peters Church hall, Parsonage way
FRIMLEY GREEN	Speeding – Wharf Rd / Lake Rd.	12 Sept. '05 Methodist church hall, The Green
HEATHERSIDE	CCTV at Heatheridge Arcade	01 Sept. '05 Community Centre, Martindale Ave.
LIGHTWATER	Anti Social Behaviour – The Square	23 August '05 Lightwater Country park
MYTCHETT	Speeding – Coleford Bridge rd.	06 Sept. '05 Community Centre, Mytchett rd.
DEEPCUT		08 Sept. '05 Old Community Centre, Dettingen Rd.
OLD DEAN	Anti Social Behaviour – Old Dean Shops	24 Sept. '05 Youth Centre, Kingston rd.
ST.MICHAELS	Anti Social Behaviour & Motor Vehicle Damage – Gordon Rd. & Gordon Ave.	22 Sept. '05
CAMBERLEY TOWN	Parking	
WATCHETTS		22 Sept. '05
WEST END	Anti Social Behaviour - Rosewood Way	08 Sept. '05 Tringham Hall, Benner Lane
WINDLESHAM		20 Oct. '05 St.John's Church, Church Rd.

Findings from the Fear of Crime Survey and Audit 2004

- Surrey Heath remained one of the safest Boroughs in England with overall crime levels staying well below the national average. Within Surrey, Surrey Heath ranked the 4th safest out of 11 Borough/Districts for overall levels of crime and the 3rd safest in terms of rate of crime per 1,000 of population.
- In spite of this, many people were worried that they might become victims of crime; they also felt that their quality of life was impaired by factors in their local environment such as speeding, traffic, litter and vandalism.
- 75% of residents felt that the Councils, Police and other partners involved in crime reduction were doing a good job in tackling crime and disorder in the Borough.
- The focus on community orientated policing, such as the introduction of Police Community Support Officers (PCSO's) and Neighbourhood specialist Officers (NSO's), had been well received.
- Many considered Camberley town centre unsafe at night and at weekends. Town ward was responsible for a third of all alcohol related violent crime in Surrey Heath. Almost half of all incidents of criminal damage occurred on a Friday or Saturday.
- Many young people were unaware of the impact their presence had on others around them. For many local residents this activity had become an issue in their neighbourhood.
- The "Fear of Crime" survey found that even young people, who would consider themselves to be extremely "streetwise", in terms of their life experiences, had themselves been victims of intimidation.
- The survey showed that over a third (37%) of young people had been a victim of bullying, either in or out of school.

The Standing Citizens Panel raised Crime and Disorder points as follows:

- **Licensing Changes**
 - Concerns about Town Centres – number of places; longer opening hours; objections required living within 100 metres of the premises; cumulative effect of premises applying for longer opening hours was not taken into account.
 - buses will be needed to get people in and out of the town centre.
 - under age sales will need to be monitored
 - Camberley Town Centre violence – effect of longer opening hours.
- **Anti Social Behaviour Orders** Panel members from the rural area felt that (ASBOs) and Acceptable Behaviour Contracts (ABCs) were having a positive impact.
- **Speeding** was felt to be more of a perceived issue but Panel members felt that perceived problems were just as much an issue for local people as actual problems.